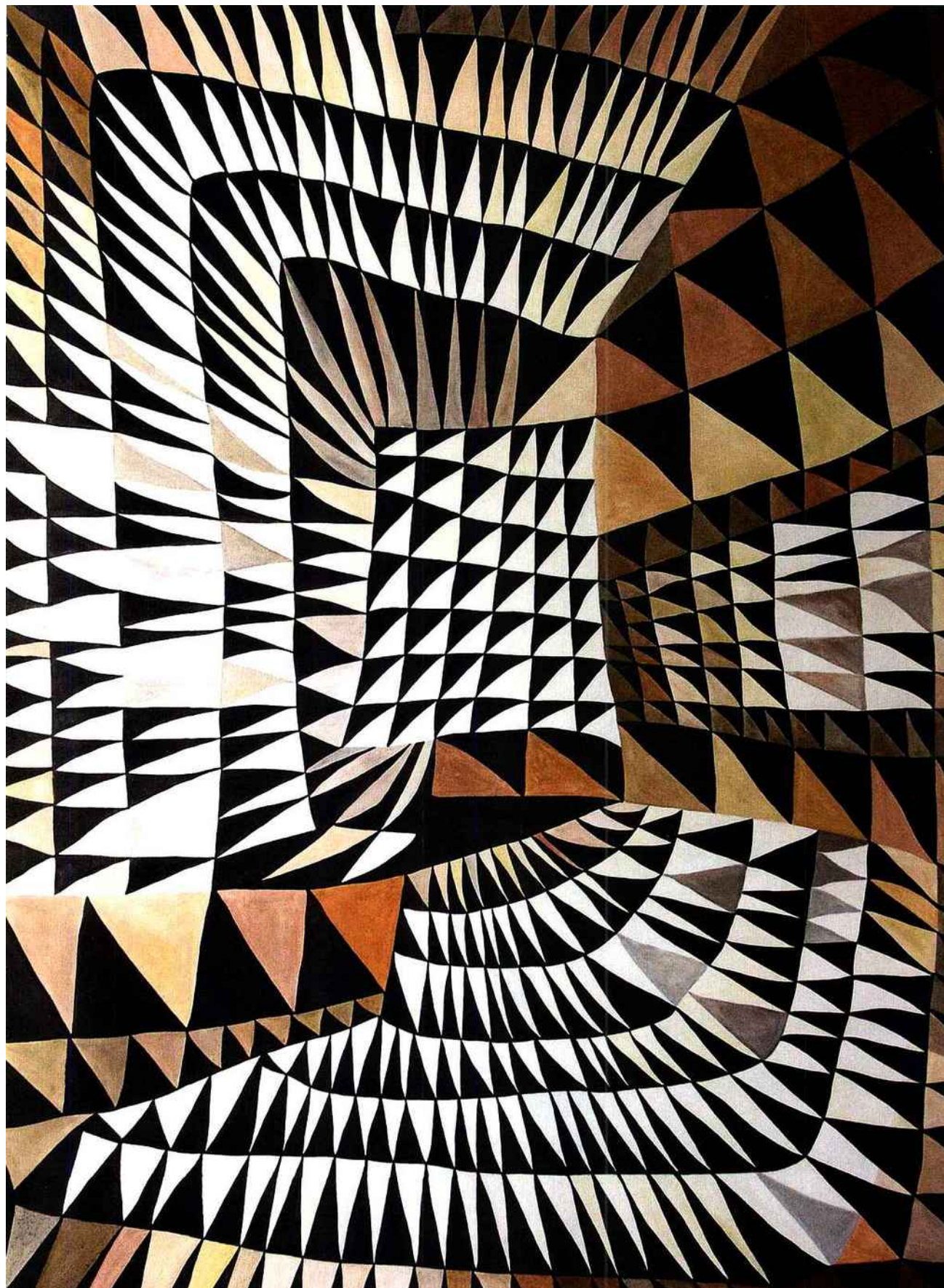


LES SOLS SOUPLÉS SOFT FLOORING

POUR EN FINIR AVEC LE LINO
BASIQUE, LIÈGE ET SUPPORTS
PLASTIFIÉS SE SOPHISTIQUENT DE
DESSINS LUXUEUX ET EXUBÉRANTS.
LEAVING LINOLEUM BEHIND, CORK
AND PLASTIC-COATED COVERINGS
ARE BECOMING INCREASINGLY
SOPHISTICATED WITH UPBEAT,
LUXURIOUS MOTIFS.

Toile vinyle peinte à la main.
Hand-painted vinyl.
N° 45, FRANÇOISE CARATINI.



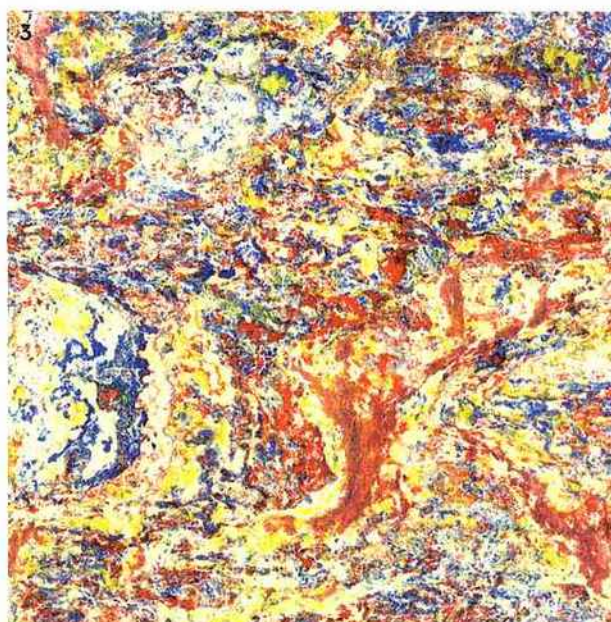


1. Plaques de cuir doré patiné.
Gilded and patinated leather tiles.
Breteuil, COLLECTION CUIR DE FLANDRES, ZUBER.



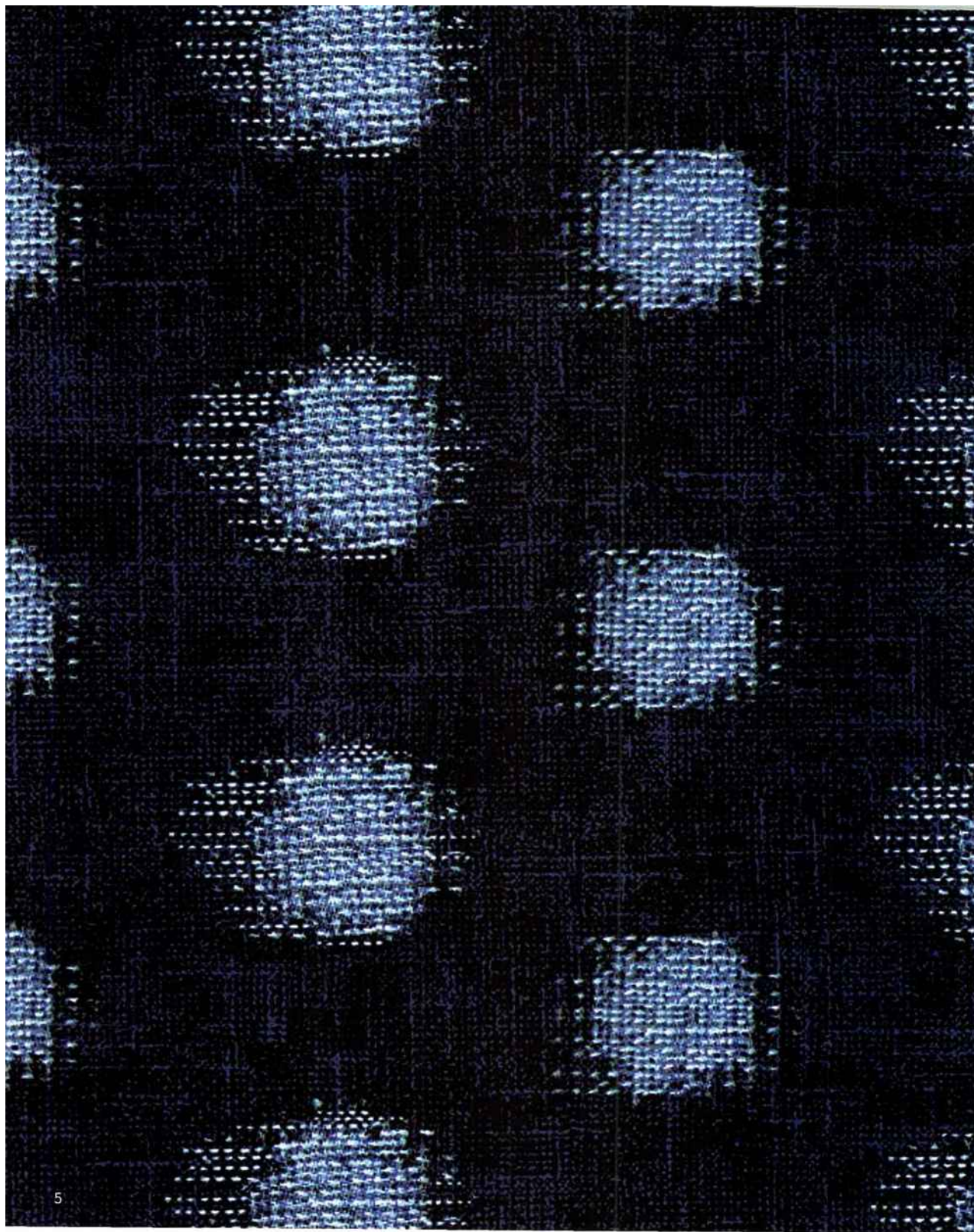
2. Toile vinyle peinte à la main.
Hand-painted vinyl.
N° 24, FRANÇOISE CARATINI.

3. Linoleum. Linoleum. *Marmoleum*
Dutch Design, DESIGN RICHARD HUTTEN
POUR FORBO.



4. Plaques de liège. Cork tiles.
Belgrade, CORK DESIGN.





5. Revêtement Nylon imprimé.
Nylon print wall covering.

Flotex Sottsass Kasuri,
DESIGN ETTORE SOTTASS POUR FORBO.